

Mechanical fault detection and classification using pattern recognition based on bispectrum algorithm

Michael R.Habib^a, Mohammed A. Hassan^{a*}, Rania A. Abul Seoud^a, Abdel M. Bayoumi^b

^a *Electrical Engineering Department, Fayoum University, Fayoum, Egypt*

^b *Mechanical Engineering Department, University of South Carolina, SC, USA*

Abstract

Higher order spectral analysis of vibration signals is an efficient tool in condition monitoring and fault detection and diagnosis of rotating machinery. In this paper, features extracted from vibration bispectrum are used in fault classification of critical rotating components in the AH-64D helicopter tail rotor drive train system. Different classifiers are used to compare the performance of the proposed algorithm based on bispectrum to the traditional algorithms based on linear auto- and cross-power spectral analysis techniques. Principal component analysis (PCA) is used to reduce the size of features extracted from vibration bispectrum and linear spectral analysis, then the reduced set is used to train different classifiers. Using different criteria such as accuracy, precision, sensitivity, F score, true alarm, and error classification accuracy (ECA), the performance of the proposed algorithm is evaluated and compared against similar classification algorithms. The proposed method is verified using real-world data collected from a dedicated AH-64D helicopter drive-train research test bed at the CPM center, University of South Carolina. The proposed algorithm increases the accuracy of fault detection to 96.88%, precision to 95.83%, sensitivity to 95.83%.

Keywords : Vibration Analysis; Bispectrum; Condition Based Maintenance; Machine Learning; Principle Component Analysis; Logistic Regression; Rotating Machinery Fault Detection

1. Introduction

Condition based maintenance (CBM) is a maintenance program that uses information collected through continuous condition monitoring of systems to recommend maintenance decisions [1]. CBM has proven to be more reliable, accurate and efficient than traditional time based maintenance (TBM) which depends on changing parts after working for finite number of operational hours or finite period of time. CBM is more important for rotorcraft as there are a lot of critical component that experience high dynamic load and their maintenance after failure needs high cost. More important than cost is the safety of all people on the rotorcraft. P. D. Samuel in [2] discussed the cost of failure of rotorcraft and summary of accident count and their reasons.

* Corresponding author: hassanm@fayoum.edu.eg.

One of the CBM objectives is to discover and classify errors in high asset value mechanical systems such as the AH-64D tail rotor drive system. Failure of such a system may lead to serious helicopter accidents and loss of lives. CBM consists of three steps: First, sensor data are acquired to collect information about the mechanical system under study (e.g., vibration signal as in [3] and acoustic signal as in [4]). After data acquisition, collected data is processed to extract indicative features which are correlated to the system's health. Many signal processing techniques can be used such as time domain analysis discussed in [5], frequency domain analysis including power spectrum and bispectrum [6], time frequency analysis [7] and wavelet analysis [4]. Third step in CBM is the fault detection and diagnosis using machine learning algorithms such as pattern recognition in order to map features into faults. Different studies have been conducted to extract condition indicators (CI) for fault detection. For example, spectral peak 2 (SP2) has been used as a CI to detect drive shafts' misalignment and/or imbalance [5]. However, this CI has limited diagnostic capabilities where it doesn't specify fault type. CIs based on higher order spectral analysis, such as quadratic coupling index A_{QC} based on cross bispectrum [6] and quadratic nonlinearity power index $QNLPI$ based on normalized bicoherence [8], have shown higher performance in terms of distinguishing different fault cases. However, using higher order spectral analysis needs more experience and human efforts in order to correctly interpret results and categorize fault cases.

In this paper, based on vibration bispectral analysis, a fully automated fault detection and classification algorithm is proposed and used to distinguish three common drive-shaft faults in the AH-64D tail rotor drive train, namely; shaft misalignment, shaft imbalance, and a combined case of shaft misalignment and imbalance from a baseline healthy case. The proposed algorithm uses features extracted from both auto- and cross-bispectrum. The extracted features are then filtered using principle component analysis (PCA) to reduce the burden on the pattern recognition algorithm. Using real-world vibration data, different classification algorithms are compared against each other to get the highest performance using a set of criteria including accuracy, precision, sensitivity, F score, true alarm and error classification accuracy (ECA). Classification algorithms used in this study are naïve bayes, linear discriminant analysis, quadratic discriminant analysis, support vector machine, multiclass logistic regression

This paper is organized as follows: First, mathematical foundation to calculate auto and cross power spectrum and bispectrum is introduced in section 2. Experiment setup and vibration data collection and organization are discussed in section 3. Section 4 introduces the steps of the proposed classification algorithm. In section 5, evaluation criteria to compare the proposed algorithm based on bispectral analysis to its power spectral analysis counterpart are discussed. Section 6 presents the results of the study, and section 7 is the conclusion.

Nomenclature

AHB	aft hanger bearing
CBM	condition based maintenance
CI	condition indicator
FHB	forward hanger bearing
PCA	principle component analysis
SVM	support vector machine
HOS	higher order statistical analysis
LOI	loss of information
CM	confusion matrix
ECA	error classification accuracy

2. Theoretical foundation of bispectral analysis

Information in the vibration signals collected from rotating mechanical components can be extracted and interpreted using different signal processing concepts. One of the fundamental concepts is the auto correlation function $R_{xx}(\tau)$ which is defined for a wide-sense stationary signal $x(t)$ as:

$$R_{xx}(\tau) = x(t) \star x(t) = \int_{-\infty}^{\infty} x^*(t)x(t + \tau)dt \quad (1)$$

where (\star) is the correlation operator and $(*)$ is the complex conjugate of the signal. Auto correlation measures statistical dependence between signal $x(t)$ and a time shifted version of it, $x(t + \tau)$, which in turn reveals information about any periodicity in the signal. Cross correlation function, on the other hand, measures the statistical dependence between a signal $x(t)$ and a shifted version of another signal $y(t + \tau)$, and can be calculated using equation (2).

$$R_{yx}(\tau) = x(t) \star y(t) = \int_{-\infty}^{\infty} x^*(t)y(t + \tau)dt \quad (2)$$

Since it is impossible from the experimental point of view to have access to all realizations of $x(t)$ and $y(t)$, the auto and cross correlation are estimated statistically from a finite number of realizations as described in equations (3) and (4).

$$R_{xx}(\tau) = E\{x^*(t)x(t + \tau)\} \quad (3)$$

$$R_{xy}(\tau) = E\{x^*(t)y(t + \tau)\} \quad (4)$$

where $E\{.\}$ is the expected function operator.

The Wiener-Khinchin theorem [9] states that auto-power spectrum $P_{xx}(f)$ is the Fourier transform of the auto correlation function $R_{xx}(\tau)$ and the cross-power spectrum $C_{yx}(f)$ is the Fourier transform of cross correlation function $R_{xy}(\tau)$ and they can be estimated using equations (5) and (6) respectively.

$$P_{xx}(f) = E\{X^*(f)X(f)\} = E\{|X(f)|^2\} \quad (5)$$

$$C_{yx}(f) = E\{X^*(f)Y(f)\} \quad (6)$$

where signal $X(f)$ is the Fourier transform of the signal $x(t)$ which can be calculated by the following equation:

$$X(f) = \int_{-\infty}^{\infty} x(t)e^{-j2\pi ft}dt \quad (7)$$

Bispectrum is the Fourier transform of the third order correlation function R_{xxx} . It is a very powerful technique to detect nonlinearities in the signals. It detects and quantifies frequency components which result from nonlinear physical phenomena by using phase coupling. If two frequency components are cross-interacted together due to some nonlinearity, two new frequency components will be generated at the sum and the difference values of the interacting frequencies, and the resulted components will be phase coupled to the interacting frequency[6][10].

Third order auto correlation function $R_{xxx}(\tau_1, \tau_2)$ and third order cross correlation can be estimated using equations (8) and (9) respectively.

$$R_{xxx}(\tau_1, \tau_2) = E\{x^*(t)x(t + \tau_1)x(t + \tau_2)\} \quad (8)$$

$$R_{xxy}(\tau_1, \tau_2) = E\{y^*(t)x(t + \tau_1)x(t + \tau_2)\} \quad (9)$$

The auto bispectrum is the Fourier transform of the auto correlation function R_{xxx} which describes frequency components resulted from nonlinear relation between two frequency components in the same signal. While the cross bispectrum is the Fourier transform of the cross correlation signal R_{xxy} and it describes frequency components in a signal $Y(f)$ that resulted from nonlinear relation between two frequency components in the signal $X(f)$. Equation (10) is used to estimate auto bispectrum while equation (11) is used to estimate cross bispectrum.

$$B_{xxx}(f_1, f_2) = E\{X(f_1)X(f_2)X^*(f_3 = f_1 + f_2)\} \quad (10)$$

$$S_{xxy}(f_1, f_2) = E\{X(f_1)X(f_2)Y^*(f_3 = f_1 + f_2)\} \quad (11)$$

3. Experimental data description

Data used in this study are collected using two accelerometer sensors located at the forward hanger bearing (FHB) and the aft hanger bearing (AHB) of an Apache AH-64D helicopter experimental tail rotor drive system as shown in Fig. 1 [6]. The two sensors collect vibration signal simultaneously every 2 minutes during 30 minutes experimental run. The experiment is repeated 16 times using four different hanger bearings with four serial numbers 0321, 0316, 0373 and 01ARL and the experiment is repeated four times for each hanger bearing to test different-shafts settings as follows: 1- base line case (balanced and aligned), 2- imbalanced and aligned, 3- balanced and misaligned, and 4- imbalanced and misaligned.

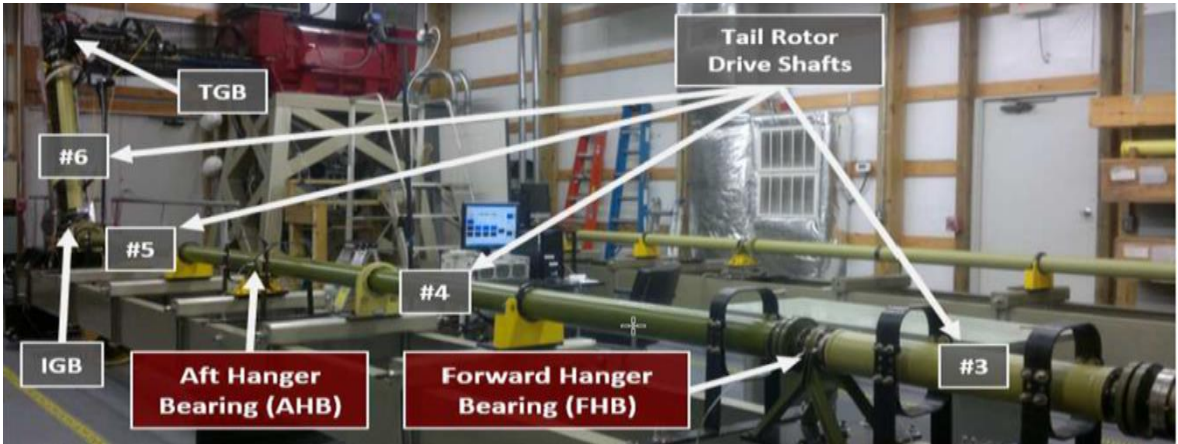


Fig. 1. Experiment helicopter tail rotor drive system with labelled drive shafts and indication for sensor places [3]

Each case of the four shaft settings is given a unique digit from 0 to 3 and this digit is added before the serial number of any hanger bearing to give a unique test-code for each shaft and hanger bearing case (e.g., for the test number 10321, first digit to the left, 1, indicates shaft condition and the remaining number indicates the bearing serial number).

Each vibration segment has 65536 data points collected at sampling rate of 48 kHz (f_s) which results in data collection time of approximately 1.31 sec per acquisition. Vibration signals are collected during operation of the test stand at a constant rotational speed of 4863 rpm (81.05 Hz) from the prime mover. The input torque

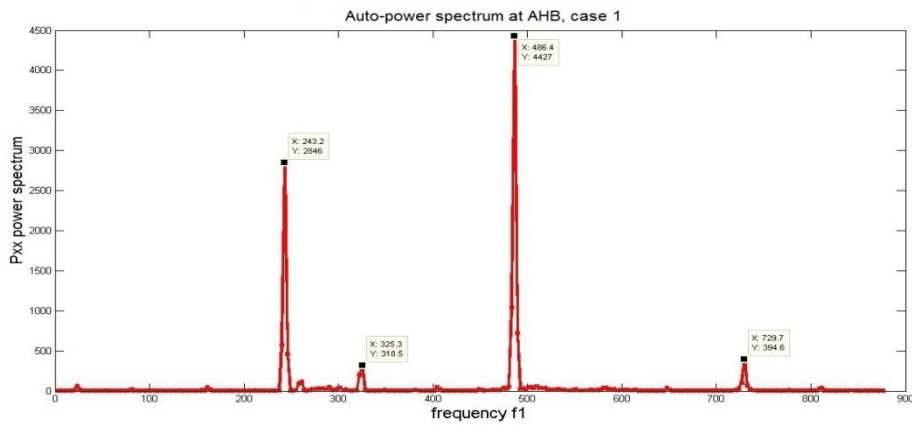
applied to the input of the shaft and hanger bearing is equal to 32.35 ft.lb, while the output torque is equal to 111 ft.lb which is the torque applied at the output of the tail rotor gearbox.

4. Proposed classification algorithm

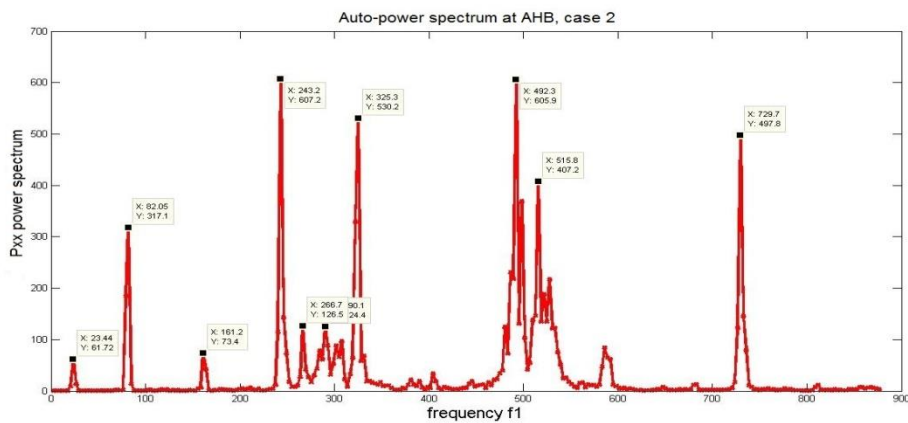
This section discusses how features are extracted from power spectrum and bispectrum, how PCA is used to reduce features number and how multiclass logistic regression, which gives best results among all classifiers, can be used to classify features into correct classes.

4.1. Auto and cross power spectrum

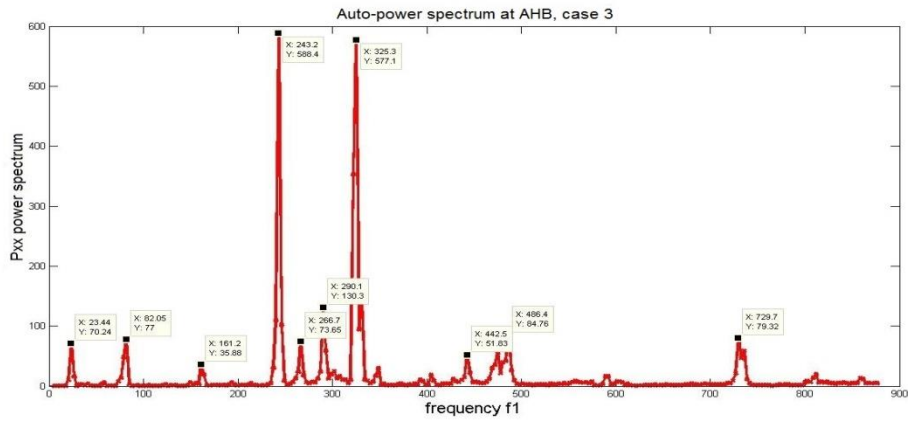
For the vibration signals collected at the AHB and FHB sensors, autocorrelation is first calculated for individual AHB and FHB signals, then the cross correlation between them is estimated using equations (5) and (6) given in section 2. Features extracted from power spectra are then fed directly to the PCA algorithm. In this subsection, some plots of vibration power spectra are presented in order to get the sense of the required human efforts to interpret the results. However, this step of plotting the result is not required.



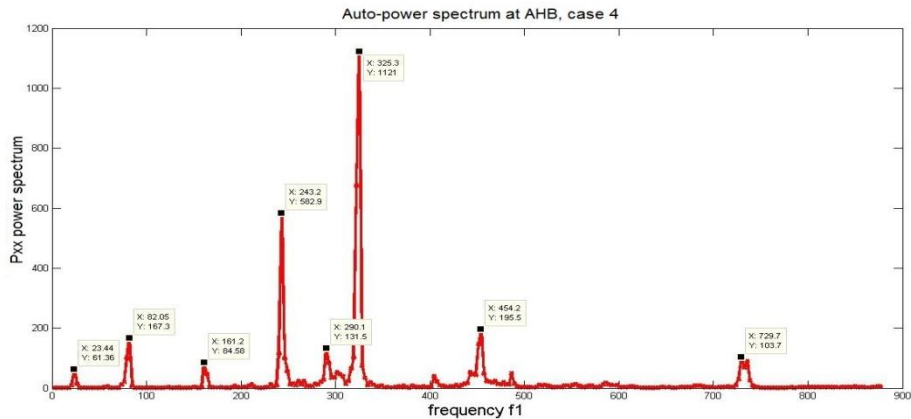
(a)



(b)



(c)



(d)

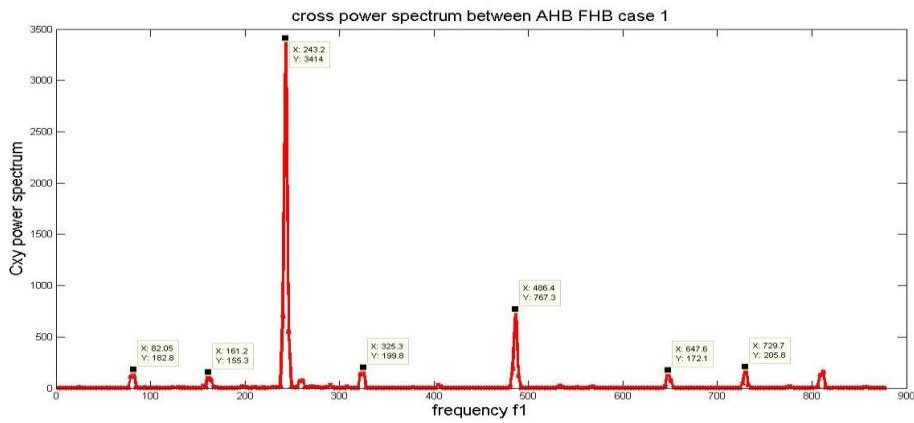
Fig. 2. (a) AHB auto power spectrum case 1; (b) AHB auto power spectrum case 2; (c) AHB auto power spectrum case 3; (d) AHB auto power spectrum case 4;

Figure 2 shows the auto power spectrum at the AHB and how vibration power is distributed at different frequencies especially at the fundamental frequency (81.05 Hz) and its harmonics 2R at (161.2 Hz), 3R at (243.2 Hz), 6R at (486.4 Hz). It can be noted that at the healthy case most of the vibration power is located at 3R and 6R harmonics as shown in Fig. 2(a). However, in the second case (unbalanced and aligned shafts) the power distributed over a range of frequencies including 1R, 2R, 3R, 4R, and 9R as shown in Fig. 2(b). The third case (balanced and misaligned shafts) has vibration power which is distributed over the 3R and 4R harmonics as shown in Fig. 2(c). In the last case (unbalanced and misaligned shafts), most of the vibration power is located at 4R and there are small peaks at 1R, 2R and 3R as shown in Fig. 2(d).

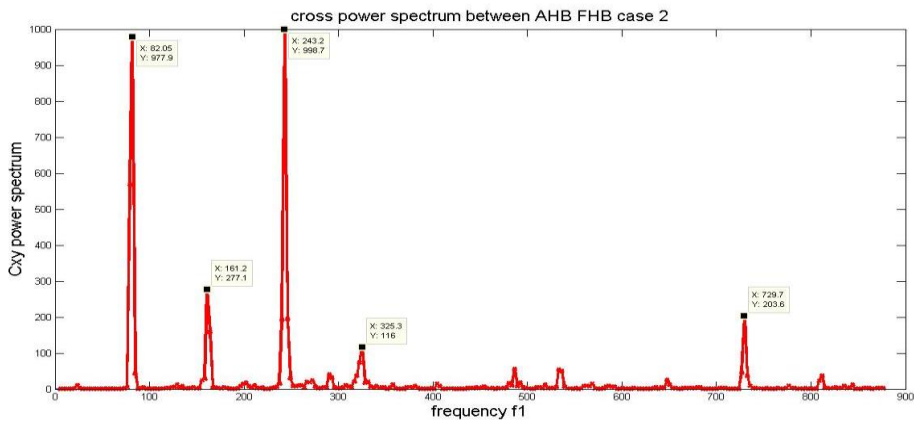
Cross power spectrum between AHB and FHB is also a very important tool to extract features that are important in distinguishing the four cases under study. Figure 3 shows the cross power spectrum variations between different cases.

The cross power spectrum between FHB and AHB has distinct vibration power distribution as in the case of auto power spectrum of the AHB discussed above. The healthy case shown in Fig. 3(a) has vibration peaks at 3R harmonic. Case 2 shown in Fig. 3(b) has vibration power distributed between the fundamental frequency and the third harmonic, while case 3 shown in Fig. 3(c) has power at 1R, 2R, and 3R. In the last case shown in Fig. 3(d), vibration power is distributed over 1R, 2R, 3R, 5R, and 9R.

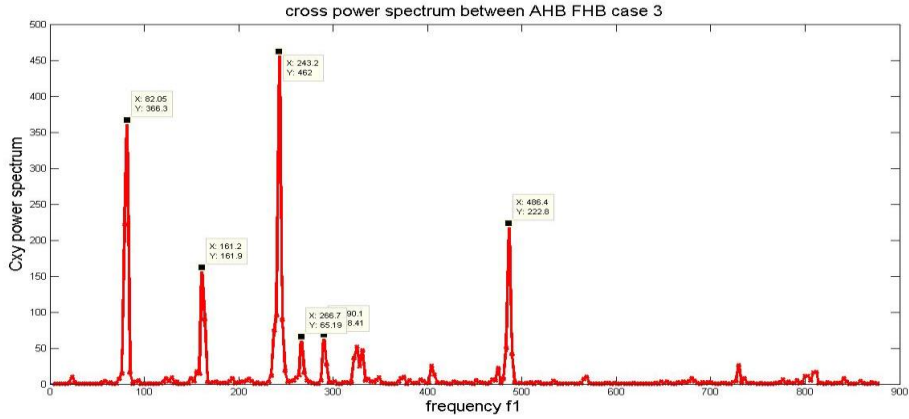
To automate the process of fault classification, auto and cross power spectral data of the AHB, and FHB are used to extract features to be used for pattern recognition. An easy way to extract the feature set is to think about each frequency pin as an independent feature and feed the whole spectral contents to a classifier. However, The large number of frequency pins may lead to higher cost of computation in terms of resources and time. Therefore, principle component analysis PCA is suggested to be used in order to reduce the number of features to only 95 features as will be shown later in section 5.



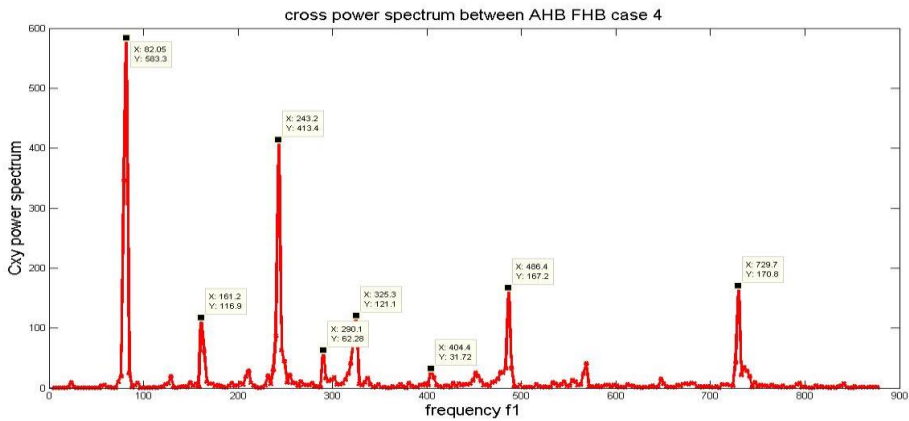
(a)



(b)



(c)



(d)

Fig. 3. (a) Cross power spectrum case 1; (b) Cross power spectrum case 2; (c) Cross power spectrum case 3; (d) Cross power spectrum case 4;

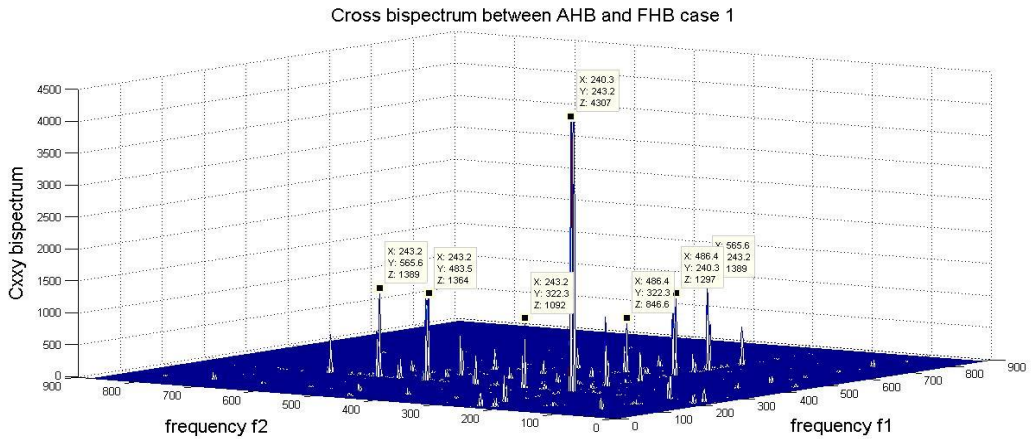
4.2. Auto and cross bispectrum

For feature extraction from bispectrum, auto bispectrum from the individual AHB and FHB signals are both estimated. Also, cross bispectrum between FHB and AHB and cross bispectrum between AHB and FHB are calculated. All the four measures are used to form the feature set which is then fed to the PCA algorithm. Again, although not required as part of the classification algorithm, some bispectral plots are discussed in this section to get a sense of its complexity and the effort needed to interpret it without applying the proposed automated classification algorithm.

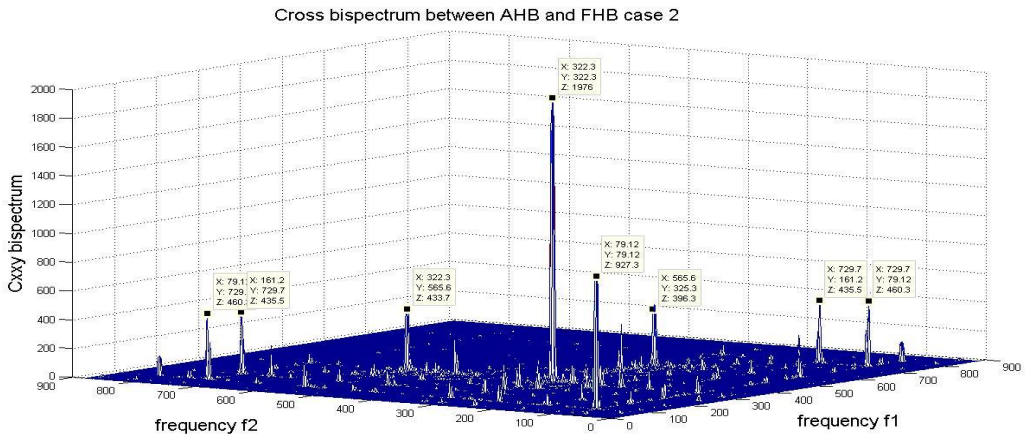
Figure 4 shows the cross bispectrum between AHB, FHB in the four studied cases. As shown in Fig 4(a), nonlinear interactions at healthy case takes place between 3R with some other harmonics such as 3R, 6R, and 7R. However, in the second case (unbalanced shafts), nonlinearity appear between 4R with other harmonics

such as 4R, 7R, and 9R and also between 1R and 1R as shown in Fig. 4(b). In the third case (misaligned shafts), nonlinear interactions occur between 3R with 1R, 3R, 4R, 5R as shown in Fig. 4(c). While in the last case (unbalanced and misaligned shafts), nonlinear interactions take place between 3R with 3R and 1R and between 4R and 6R as shown in Fig. 4(d). Thus, different cases can be distinguished from each other by different characterizing nonlinear interactions patterns.

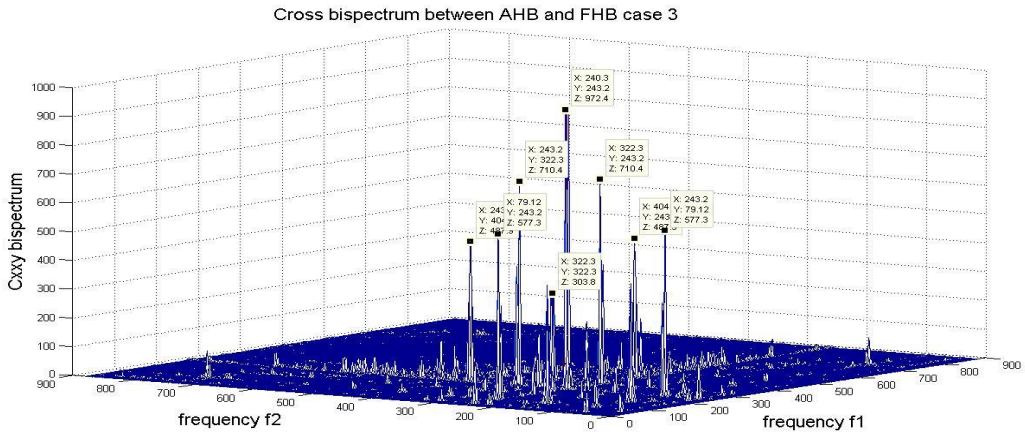
By taking the information from the bispectral analysis in to consideration and use features extracted from them in pattern recognition after applying PCA, the accuracy of the classification increases as will be discussed in section 5.



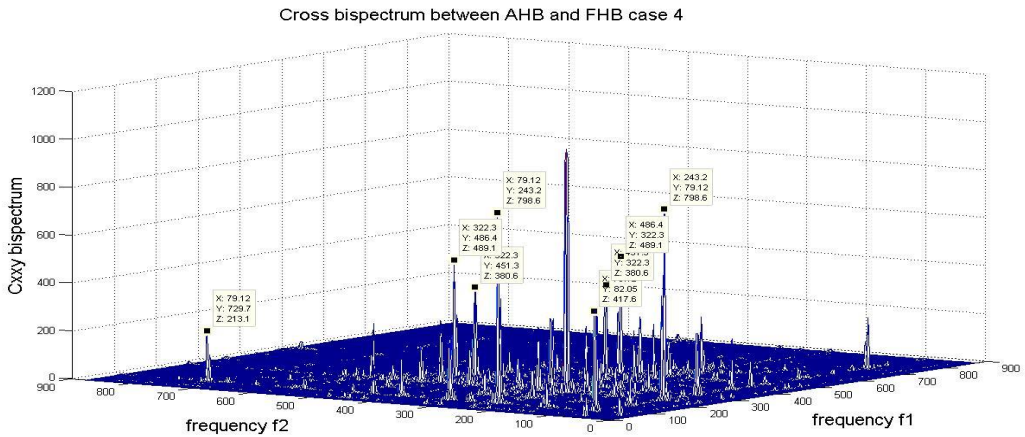
(a)



(b)



(c)



(d)

Fig. 4. (a) Cross bispectrum case 1; (b) cross bispectrum case 2; (c) cross bispectrum case 3; (d) cross bispectrum case 4;

4.3. Principle component analysis

PCA is a widely used technique for dimensionality reduction. It can be defined as the linear projection that minimizes the average projection cost, defined as mean squared distance between the data [11]. PCA works by finding a set of orthogonal components that minimizes the mean square error of the reconstructed data and represent the original data with fewer components, which reduces the dimension of the data [12]. Loss of information (LOI) can be calculated by finding the ratio between the eigenvalue (λ_i) of this feature and

summation of eigenvalues as a result of the elimination of the element i th as indicated in equation (12) is the calculation of LOI. PCA components are ordered by largest variance.

$$LOI = \frac{\lambda_i}{\sum_{m=1}^n \lambda_m} \quad (12)$$

where n is length of feature set.

Reconstruction error in PCA is the average of the difference between the original matrix and the reconstructed matrix.

4.4. Multiclass logistic regression

In this study, multiclass logistic regression has the highest reliability and the best results among other classifier used, as will be shown later in section 6. Therefore, mathematical foundation of this pattern recognition algorithm is presented in this subsection.

Logistic regression is a discrete supervised learning algorithm that classifies multiclass problems by separating them into a number of binary class problems [11]. It converts the multiclass problem to binary class problems by taking every class against all the other classes. So, to classify data into four classes as in our case, logistic regression separates the problem into four binary problems.

- a- Class 1 versus class 2,3,4
- b- Class 2 versus class 1,3,4
- c- Class 3 versus class 1,2,4
- d- Class 4 versus class 1,2,3

Then for each sample, logistic regression train the hypothesis ($h_{\theta}^{(i)}(x)$) four times for each class i to predict the probability that ($y=1$) at this class and the class i that maximize the probability that $h_{\theta}^{(i)}(x) = 1$ is considered as the class that the sample belongs to. So, if the largest hypothesis was at case c, the sample belongs to class 3.

Equation (13) is used to calculate the hypothesis ($h_{\theta}(x)$) for every binary classification problem which depends on sigmoid function evaluated in equation (14). After hypothesis calculation, the cost function $J(\theta)$ is evaluated, as described in equation (15), which represents the average error between hypothesis and reality on all training samples. Finally, gradient descent algorithm is used to minimize the cost function and update the new values of theta parameters as shown in equation (16).

$$h_{\theta}(x) = g((\theta^T x)) \quad (13)$$

where $g(\cdot)$ is the sigmoid function equation (14), $(\cdot)^T$ is the transpose of the matrix and x is the training samples features.

$$g(z) = \frac{1}{1+e^{-z}} \quad (14)$$

$$J(\theta) = -\frac{1}{m} (\sum_{i=1}^m (y^{(i)} \log(h_{\theta}(x^{(i)})) + (1 - y^{(i)}) \log(1 - h_{\theta}(x^{(i)}))) \quad (15)$$

where m is number of training samples $y^{(i)}$ is the real class of sample i of the training set, $x^{(i)}$ is the features of the training sample i .

$$\theta_j := \theta_j - \alpha (\sum_{i=1}^m (h_{\theta}(x^{(i)}) - y^{(i)}) x_j^{(i)}) \quad (16)$$

where θ_j is the parameter number j in the parameters vector, $(:=)$ means simultaneous update of all parameters, α is the learning rate, $x_j^{(i)}$ is the feature number j in the training sample number i .

Gradient descent is an optimization algorithm that updates the value of theta parameters in the direction that minimizes the cost function $J(\theta)$ iteratively.

5. Algorithm performance evaluation

In this section criteria used to evaluate the proposed algorithm are discussed. For power spectrum, 96 samples are collected to be used for training and testing different classifier, 24 samples for every shaft case of the four cases. And for bispectrum 128 samples are collected, with 32 samples for every study case. In power spectrum and bispectrum 70% of the samples are used as a training set and 30% as a testing set.

5.1. Fault detection evaluation criteria

In this subsection, the evaluation criteria used compare the performance of pattern recognition algorithms based on bispectrum against conventional power spectrum are introduced. Different classification algorithms are to conduct this study including naïve bayes, linear discriminant analysis, quadratic discriminant analysis, support vector machine, multiclass logistic regression and trained neural network. The criteria used in this comparison are accuracy, precision, sensitivity, F score, true alarm, and error classification accuracy (ECA). Those criteria are calculated using confusion matrix (CM) elements described in equation (17) [12].

$$CM = \begin{pmatrix} S_{11} & S_{12} & S_{13} & S_{14} \\ S_{21} & S_{22} & S_{23} & S_{24} \\ S_{31} & S_{23} & S_{33} & S_{34} \\ S_{41} & S_{42} & S_{43} & S_{44} \end{pmatrix} \quad (17)$$

Every row in CM represent actual values and every column represent predicted values so S_{xy} represent values that actually in class x and predicted by the classifier to be in class y . Recall that 1 is the healthy case 2 is the unbalanced case, 3 is the misaligned case and 4 is the unbalanced and misaligned case. The definitions of evaluation criteria parameter and how to calculate them are as follows:

- 1- Accuracy : a value express the degree of closeness between reality and classifier results, it is measured as the ratio of truly classified samples to the total number of samples

$$accuracy = \frac{S_{11}+S_{22}+S_{33}+S_{44}}{\sum_{i=1}^4 \sum_{j=1}^4 CM(i,j)} \quad (18)$$

- 2- Precision : a value that express the classifier ability to predict error correctly and it can be measured by the ratio between total number of samples that are *truly* classified as they contain error to the total number of samples that are classified as they contain error.

$$precision = \frac{S_{22}+S_{33}+S_{44}}{\sum_{i=1}^4 (CM(2,i)+CM(3,i)+CM(4,i))} \quad (19)$$

- 3- Sensitivity: is the classifier ability to distinguish and classify error, it is calculated by the ratio between truly classified samples predicted to have error and the total number of samples that actually contain error.

$$sensitivity = \frac{S_{22}+S_{33}+S_{44}}{\sum_{i=1}^4 (CM(i,2)+CM(i,3)+CM(i,4))} \quad (20)$$

- 4- F score : is the weighted average of precision and sensitivity

$$F \text{ score} = \frac{2*precision*sensitivity}{precision+sensitivity} \quad (21)$$

- 5- True alarm: the ratio between number of times the classifier predicts error and there was actually an error.

$$true \text{ alarm} = 1 - \frac{S_{12}+S_{13}+S_{14}}{\sum_{i=1}^4 (CM(2,i)+CM(3,i)+CM(4,i))} \quad (22)$$

6- Error classification accuracy (ECA): a parameter that measures accuracy of classifying samples predicted to have errors and they actually have errors in the right class.

$$ECA = \frac{S_{22} + S_{33} + S_{44}}{\sum_{i=2}^4 \sum_{j=2}^4 CM(i,j)} \tag{23}$$

5.2. PCA feature selection

PCA algorithm is used to reduce the number of features extracted from power spectra from 4096 to 95 features. The number of principal components is less than or equal to the number of original samples [11] [13]. Therefore, PCA converts 4096 features to a number of features less than the number of samples which in our case 96 samples so we get 95 linearly uncorrelated features and every principle component contain some information as shown in figure 5 which gives loss of information at every principle component we use all the features given from PCA so as to represent 100% of data information.

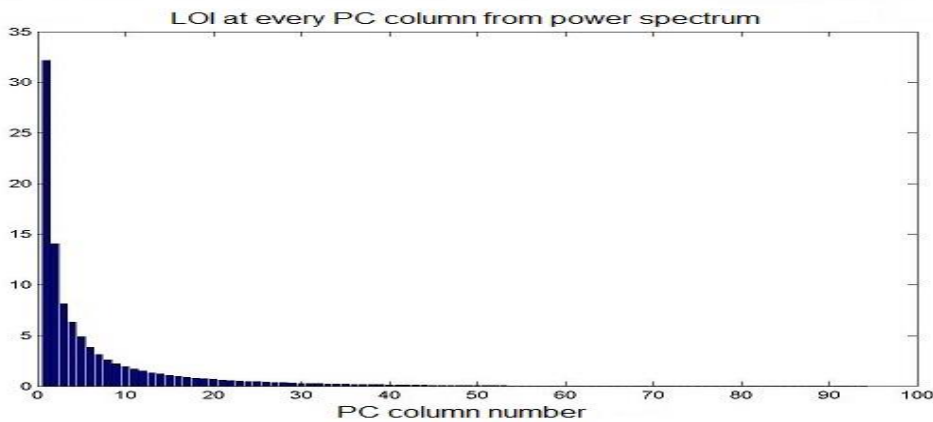


Fig. 5. PCA loss of information at every column of PCA features extracted from vibration power spectrum

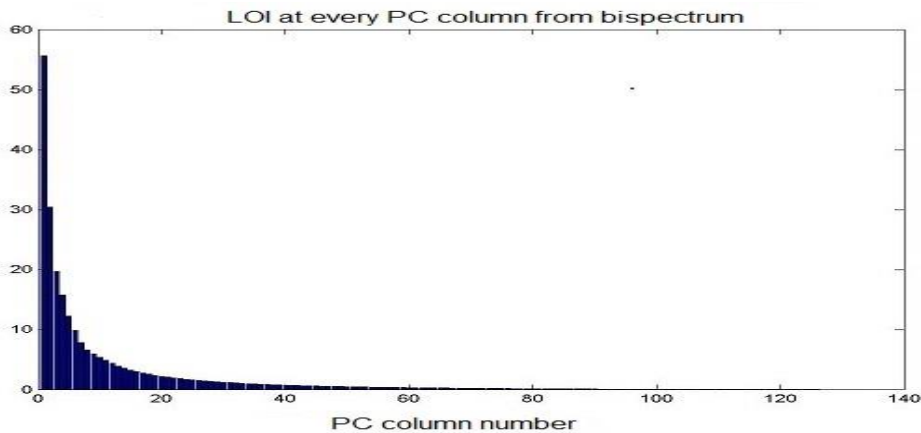


Fig. 6. PCA loss of information at every column of PCA features extracted from vibration bispectrum

Bispectrum has 360000 features which represents a burden on the pattern recognition algorithm. Therefore, PCA is used to reduce the number of features to a number less than or equal the samples which in this case is equal to 128 samples. PCA output in this case is 127 linearly uncorrelated features. In PCA, smaller eigenvalues of covariance matrix provide less pattern information [11]. Figure 6 shows the loss of information at every principle component of 127 components of the bispectrum. In this paper all the 127 features used in order not to lose any information.

6. Results

In this section, the results of training different classifiers using features extracted from both bispectrum and power spectrum are presented and compared using the evaluation criteria discussed above.

For pattern recognition based on feature extracted from power spectrum, the best classification performance is achieved when logistic regression and neural network are used. Figure 6 and table 1 show the results of evaluation for all classifiers.

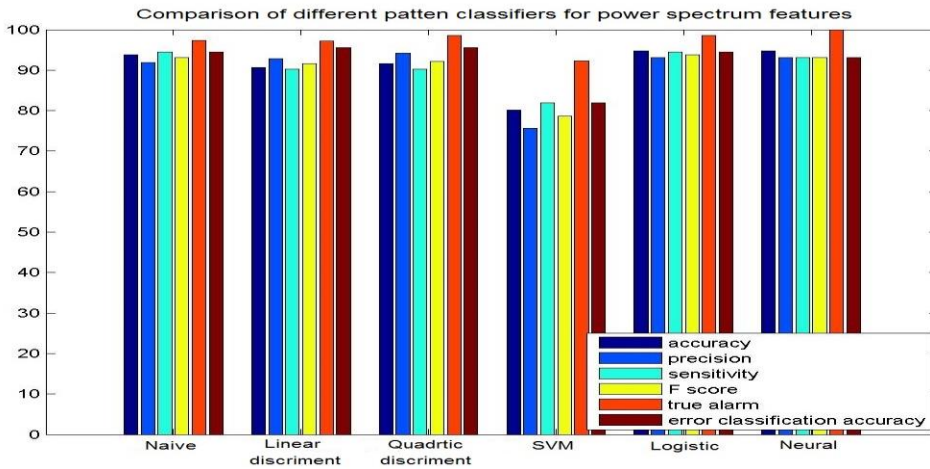


Fig. 7. Comparison of six pattern classifiers using features from power spectrum

Table 1. Comparison of different classifiers using features extracted from power spectrum

Pattern algorithms	Accuracy	Precision	sensitivity	F score	True alarm	ECA
Naïve bayes	93.750	91.89	94.44	93.15	97.29	94.44
Linear discriminant	90.62	92.85	90.27	91.54	97.14	95.58
Quadratic discriminant	91.67	94.20	90.28	92.20	98.55	95.59
Support vector machine	80.21	75.64	81.94	78.66	92.3	81.94
Logistic regression	94.79	93.15	94.44	93.79	98.63	94.44
Neural network	94.79	93.06	93.06	93.06	100	93.05

As indicated in Figure 6 and table 1, the best accuracy is achieved using neural network and logistic regression and it is equal to 94.79 %. However, for precision and error classification accuracy, quadratic discriminant analysis gives best results, for sensitivity and F score, logistic regression shows better results than other and true alarm of the neural network has the best result of 100%. So, in summary, logistic regression shows best classification performance if power spectrum features are used.

Although bispectrum is more complex techniques than power spectrum and it has more features, using bispectrum features to train pattern recognition classifiers gives better results. Among different classifiers, logistic regression and neural network have the best accuracy, precision, sensitivity and ECA. Both of them also have 100% true alarm. Figure 7 and table 2 compare all classifiers using bispectrum features.

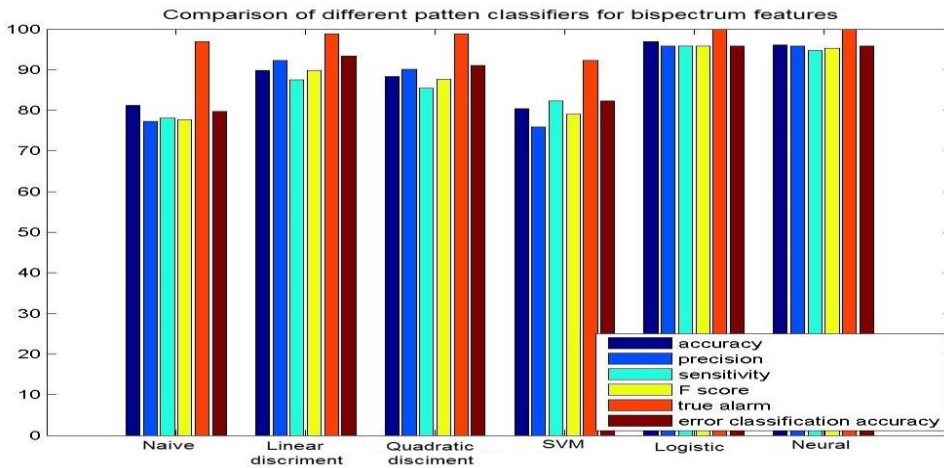


Fig. 8. Comparison of six pattern classifiers using features from bispectrum

Table 2. Comparison of different classifiers using features extracted from bispectrum

Pattern algorithms	Accuracy	Precision	sensitivity	F score	True alarm	ECA
Naïve bayes	81.25	77.32	78.13	77.72	96.91	79.79
Linear discriminant	89.84	92.31	87.50	89.84	98.90	93.33
Quadratic discriminant	88.28	90.11	85.42	87.70	98.90	91.11
Support vector machine	80.47	75.96	82.29	79	92.31	82.29
Logistic regression	96.88	95.83	95.83	95.83	100	95.83
Neural network	96.09	95.79	94.09	95.29	100	95.79

7. conclusion

In this paper, fault detection and diagnosis of a rotating mechanical system have been improved by training a pattern recognition algorithm using features extracted from vibration bispectra. The proposed algorithm uses features extracted from both auto- and cross- bispectrum then reduce the feature set using principle component analysis (PCA). The proposed algorithm has shown the ability to detect 3 different mechanical faults (drive

shaft imbalance, misalignment, and combined case of shaft imbalance and misalignment) and distinguish them from the healthy case and from each other. Six pattern recognition algorithms have been used to classify the data collected in this study from trail rotor drive train of an AH64D helicopter. A complete set of criteria has been used to evaluate the proposed algorithm including accuracy, precision, sensitivity and error classification accuracy (ECA). The proposed method has shown high performance in all of these criteria. Using features extracted from the conventional power spectrum, multiclass logistic regression and neural network have shown the highest classification performance with 94.79% accuracy, 93.15% precision, 94.44% sensitivity, and 94.44% ECA. When feature extracted from bispectrum is used, classification performance has recorded measurable increase such as 96.88% accuracy, 95.83% precision, 95.83% sensitivity, 100% true alarm and 95.83% ECA. The tradeoff of the proposed technique is its higher complexity and computational cost than linear power spectrum.

Acknowledgements

This research is funded by the South Carolina Army National Guard and United States Army Aviation and Missile Command via the Center of Predictive Maintenance (CPM) at the University of South Carolina-Columbia USA.

References

- [1] Jardine, A. K., Lin, D., & Banjevic, D., 2006. "A review on machinery diagnostics and prognostics implementing condition-based maintenance" *Mechanical Systems and Signal Processing*, 20(7), 1483-1510.
- [2] Samuel, P. D., & Pines, D. J., 2005. "A review of vibration-based techniques for helicopter transmission diagnostics" *Journal of Sound and Vibration*, 282(1-2), 475-508.
- [3] Kang, P., & Birtwhistle, D., 1998. "Analysis of vibration signals for condition monitoring of power switching equipment using wavelet transform," in *Proc IEEE-SP Int. Symp. Time Frequency and Time Scale Analysis*, pp. 6-9.
- [4] Baydar, N., & Ball, A., 2003. "Detection of gear failures via vibration and acoustic signals using wavelet transform," *Mechanical Systems and Signal Processing*, 17(4), 787-804.
- [5] Grabill, P., Seale, J., & Brotherton, T., 2002. "ATEDS: Airborne turbine engine diagnostic system," 2004 IEEE Aerospace Conference Proceedings (IEEE Cat. No.04TH8720).
- [6] Hassan, M. A., Tarbutton, J., Bayoumi, A., & Shin, Y., 2014. "Condition monitoring of helicopter drive shafts using quadratic-nonlinearity metric based on cross-bispectrum," *IEEE Transactions on Aerospace and Electronic Systems*, 50(4), 2819-2829.
- [7] Rivera, I., Ramirez, A., & Rodriguez, D., 2005. "A time-frequency signal analysis system for power quality assessment," 48th Midwest Symposium on Circuits and Systems, 2005., 2, 1670-1680.
- [8] Hassan, M. A., Bayoumi, A. E., & Shin, Y., 2014. "Quadratic-nonlinearity index based on bicoherence and its application in condition monitoring of drive-train components," *IEEE Transactions on Instrumentation and Measurement*, 63(3), 719-728.
- [9] Proakis, J. G., and Manolakis, D. G., 2007. "Power spectrum estimation," in *Digital Signal Processing: Principles, Algorithms, and Applications*, 4th ed. New Jersey: Prentice Hall, pp. 960-1040.
- [10] Kim, Y. C., & Powers, E. J., 1979. "Digital bispectral analysis and its applications to nonlinear wave interactions," *IEEE Trans. Plasma Sci. IEEE Transactions on Plasma Science*, 7(2), 120-131.
- [11] Bishop, Christopher M., 2006 "Pattern recognition and machine learning". New York: Springer.
- [12] Ghaderi, A., Mohammadpour, H. A., Ginn, H., & Shin, Y., 2015. "High impedance fault detection in distribution network using time-frequency based algorithm," 2015 IEEE Power & Energy Society General Meeting.
- [13] Hotelling, H., 1933. "Analysis of a complex of statistical variables into principal components," Baltimore: Warwick & York.